

LGT-2200SP

FAST RECOVERY WITH COMPRESSION PUMP



Health Life Longest Care

Longest



LGT-2200SP

LGT-2200SP is an air compression system comprised of intermittent pneumatic controller, sleeves and connection hose. The working principle is that the air inflating and deflating the sleeve sequentially to develop the circulating pressure on the human body. Squeezing the proximal and distal of the limbs to promote blood circulation lymphatic system and improve body microcirculation. It indicates to relieve limb fatigue and delay muscle soreness after exercise, promote the discharge of lactic acid metabolism, and help athletes recover faster after exercise or after Training.

⊕ Features

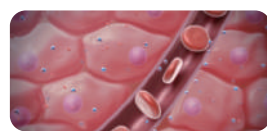
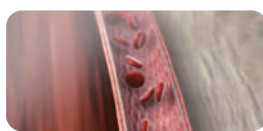
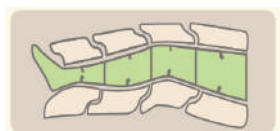
- ⊗ Portable design, easy carry
- ⊗ Pressure: 30-150 mmHg
- ⊗ Long-lasting rechargeable battery: 6500mAh Li-Po, up to 5h uses
- ⊗ High quality overlap design: 4 chambers
- ⊗ Real time pressure indication, pressure is adjustable while running
- ⊗ 6 Compression modes, treatment time 1-99 min
- ⊗ Device Shell : Fire-proof ABS (94VO standard)
- ⊗ Garments surface: 420 Denier Nylon, 0.15mm thickness
- ⊗ Adapter: Medical standard
- ⊗ Single cuff use is available
- ⊗ Warranty: 2 year for control unit, 1 year for garments
- ⊗ Easy connect, quite operation, user friendly



⊕ Indications

- ⊗ Relief muscle pains.
- ⊗ Increase blood circulation to the treated areas.
- ⊗ Promote lymphatic fluid movement.
- ⊗ Remove lactic acid , relieve soreness.
- ⊗ Improve flexibility , stimulating recovery and enhancing performance.
- ⊗ Prevent thrombus, reduce limbs drops

⊕ Effect Mechanism



By applying sequential
compression to the limbs



Speed up the circulation
of the lymphatic system
and blood



Speed up the supply
of oxygen and the
elimination of metabolites



Relieve pain after exercise

⊗ Sleeve



8-chamber full body



4-Chamber Arm Sleeve



4-Chamber Leg Sleeve



4-Chamber Waist + Thigh



4-Chamber Jacket



4-Chamber Calf + Foot Sleeve

⊕ Product Information



CHOOSE YOUR SIZE

S

165cm (5' 4") and under

M

170~185cm (5' 5"~6')

L

185cm and over (6' and over)

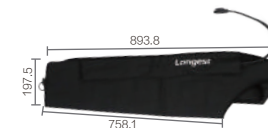
Standard Size Units: mm



Size: Medium 4-Chamber Leg Sleeve



4-Chamber Calf + Foot Sleeve



4-Chamber Arm Sleeve



8-chamber full body



4-Chamber Waist + Thigh



4-Chamber Jacket

⊕6 Compression Modes



Technical Specification

Chambers	4
Compression mode	6
Time range	1min - 99min
Pressure range	30 - 150mmHg
Rechargeable battery	6500mAh (Battery life: more than 5 hours)
Adapter	Medical standard (15V 6A)
Input voltage	AC 100 - 240V 50 - 60Hz
Dimension	270(L)X148(W)X128(H)mm
Weight	1.65KG (without battery)
Interface	2.2" OLED screen
Overlap	Yes
Warranty	Control Unit - 2 years, Garments-1 year

Garment choice and sizes - see separate Garment Folder

Certification

FDA 510(k) | K191862

CE 1639 | CE(MDD)

Canada | Health Canada

SGS | ISO13485 / MDSAP

TGA | Therapeutic Goods Administration

Longest

Guangzhou Longest Science & Technology Co., Ltd.

Address: 5&6F, Building B4, No.11, Kaiyuan Avenue, Science City, Guangzhou Hi-tech Industrial Development Zone, 510530 Guangzhou, China

Tel: 86-20-66353999 Fax: 86-20-66353920

E-mail: export@longest.cn Website: www.gzlongest.com

